



fleece: oak
rucksack: trek33

Mens Fleece

Inside every outdoor wardrobe is a good, warm fleece. Our range of fleece jackets and tops are designed to keep you warm, dry and comfortable in all types of weather.

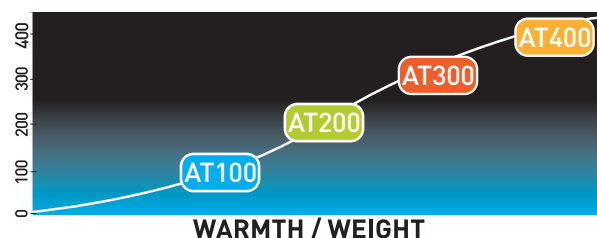
Great as an extra layer, or for everyday use, our AT rating system will help you find the right fleece for any activity. Balancing warmth and weight, the higher the rating the heavier the fleece, means we have a style to suit every taste and budget.

Using **Airtrap®** technology to create airspaces that trap and maintain body heat, our range of fleece offer warmth, protection and comfort. The fabric is soft to touch, light, breathable and allows you to move with ease.

SIZING

All available in: XS, S, M, L, XL, XXL

Selected styles available in XXS



fleece: emory



fleece: olney

FLEECE | ACRES

AT300

Style Number: MAFLFL10001

AIRTRAP
PERFORMANCE FLEECE



Technical Specification

Sueded Fleece
Full Zip Front
2 Zip Pockets
Drawcord at Hem

Fabric Composition

100% Polyester

Fabric Properties

Airtrap
300gsm



FLINT
BLACK



THYME
BLACK



NAVY TONE
NAVY

FLEECE | OAK

AT300

Style Number: MAFLFLB10001

AIRTRAP
PERFORMANCE FLEECE

Technical Specification

Rib Effect Fleece
3 Zip Pockets
Reflective Side Seam Tab
Finished with Binding

Fabric Composition

84% Polyester / 16% Rayon

Fabric Properties

Airtrap
320gsm



BLACK



DENIM



LATTE



MOSS GREEN

FLEECE | SCARTH

AT300

Style Number: MAFLFLB10002

AIRTRAP
PERFORMANCE FLEECE

Technical Specification

Rib Effect Fleece
2 Zip Pockets
Reflective Side Seam Tab

Fabric Composition

84% Polyester / 16% Rayon

Fabric Properties

Airtrap
320gsm



BLACK



DENIM



LATTE



MOSS GREEN

FLEECE | BORGOTA

AT300

Style Number: MAFLFL20004

AIRTRAP
PERFORMANCE FLEECE



Technical Specification

Sueded Fleece
2 Zip Pockets
Drawcord at Hem

Fabric Composition

100% Polyester

Fabric Properties

Airtrap
300gms



BLACK



CAPAR



MALLARD



SLATE

Style Number: MAFLFLH20001

AIRTRAP
PERFORMANCE FLEECE**Technical Specification**

Full Zip Hooded Fleece
All Over Print
Bonded Marl Fleece Lining
2 Pockets

Fabric Composition

100% Polyester

Fabric Properties

Airtrap
350gsm



BLACK PRINT

Style Number: MAFLFLH10002

AIRTRAP
PERFORMANCE FLEECE**Technical Specification**

Knitted Outer
Tonal Binding on Collar
2 Front Zipped Hand Pockets
1 Zipped Chest Pocket
Softshell Panels on Underarms
and Chest Pocket
Tonal Flatlock Stitching
Inner Drawcord at Hem
Full Front Zip Opening

Fabric Composition

100% Polyester

Fabric Properties

Airtrap
380gsm

FLINT
LIMONEPETROL
TWILIGHT

Style Number: MAFLFLH10003

AIRTRAP
PERFORMANCE FLEECE**Technical Specification**

Knitted Outer
1/2 Zip
2 Front Hand Pockets
Tonal Flatlock Stitching
Inner Drawcord at Hem
Tonal Binding Around Collar

Fabric Composition

100% Polyester

Fabric Properties

Airtrap
380gsm

FLINT
LIMONEPETROL
TWILIGHT

Style Number: MAFLGIG20001

AIRTRAP
PERFORMANCE FLEECE**Technical Specification**

Bonded Microfleece
2 Zip Pockets
Tonal Coverstitching Detail
Drawcord at Hem
Low Profile Zips
Finished with Binding

Fabric Composition

100% Polyester

Fabric Properties

Airtrap
300gsm

BLACK
SMOKE

Style Number: MAFLFLI20002

**Technical Specification**

Striped Fleece
Full Front Zip Low Profile
Inner Zip Facing
2 Zip Pockets Low Profile
Flat Cuff

Fabric Composition

100% Polyester

Fabric Properties

Airtrap
260gsm



NAVY TONE

VINE

Style Number: MAFLFLF10002

**Technical Specification**

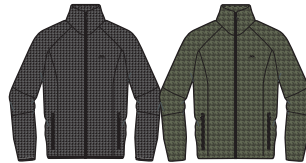
Melange Fleece
2 Zip Pockets
Finished with Binding
Low Profile Zips

Fabric Composition

100% Polyester

Fabric Properties

Airtrap
290gsm



BLACK

CAPEX

Style Number: MAFLFLG20004

**Technical Specification**

Melange Fleece
1/2 Zip Neck
Contrast Low Profile Zip

Fabric Composition

100% Polyester

Fabric Properties

Airtrap
280gsm

BLACK
SMOKESMOKE
KIWI

Style Number: MAFLFLH10007

**Technical Specification**

Melange Fleece
Grid Fleece Underarm Panels
2 Zip Pocket
Drawcord at Hem
Thumb Holes

Fabric Composition

100% Polyester

Fabric Properties

Airtrap
200gsm



BLACK
FLINT



COBALT
TWILIGHT



SMOKE
BLACK

Style Number: MAFLFLH10001

**Technical Specification**

Drop Liner
2 Zipped Hand Pockets
1 Chest Zipped Pocket
Inner Hem Drawcord with Adjustment
Flatlock Stitched Seams
Teflon Coated

Fabric Composition

100% Polyester

Fabric Properties

Dropliner:
Waterproof 3000mm
Breathable 3000mvp
Taped Seams
Teflon Coated
250gsm



BLACK
FLINT



TWILIGHT
NAVY

fleece: acres



Style Number: MAFLFLH10006

**Technical Specification**

Contrast Side Seam Panels
Contrast Facing in Collar
1/2 Zip
Grid Fabric Design

Fabric Composition

100% Polyester

Fabric Properties

Airtrap
200gsm

BRICK
FLINTBLACK
FLINTTWILIGHT
FLINTStyle Number: MAFLFLC20004 /
MCFLFLD10001**Technical Specification**

Anti Pile Polar Fleece
2 Zip Pockets
Drawcord at Hem

Fabric Composition

100% Polyester

Fabric Properties

Airtrap
280gsm



BLACK



KHAKI



NAVY



SHADOW

Style Number: MAFLGID10004

**Technical Specification**

Anti-pile Polar Fleece
Cotton Binding around Armholes
Drawcord at Hem
Trespass Embroidery on Chest
2 Zipped Pockets

Fabric Composition

100% Polyester

Fabric Properties

Airtrap
280gsm



BLACK



SHADOW

Style Number: MAFLMFH10003

**Technical Specification**

Hooded Fleece
Full Zip
2 Pockets
Coverseam Stitch Detail

Fabric Composition

100% Polyester Fleece

Fabric Properties

Airtrap
200gsm



BLACK



STONE

MICROFLEECE | KEENESBURG **AT100**

Style Number: MAFLMFI20001



Technical Specification

Anti Pilling
Contrast 1/2 Zip Neck
Contrast Flat Lock Stitching
Stretch Binding at Hem and Cuffs

Fabric Composition

100% Polyester

Fabric Properties

Airtrap
130gsm



BLACK
TANGERINE

PINE
FLINT

ULTRAMARINE
FLINT

MICROFLEECE | LAP

AT100

**Style Number: MAFLMFC10002 /
MCFLMFC10003**



Technical Specification

1/2 Zip Neck
Long Sleeves

Fabric Composition

100% Polyester

Fabric Properties

Airtrap
130gsm



BLACK

COBALT

FLINT

NAVY

RED

MICROFLEECE | TRON

AT100

Style Number: MAFLMFG20001



Technical Specification

1/2 Zip Neck
Contrast Panels & Zip

Fabric Composition

100% Polyester

Fabric Properties

Airtrap
130gsm



BLACK
SMOKE

COBALT
FLINT

CRICKET
FLINT

RED
FLINT

SMOKE
FLINT

MICROFLEECE | GLADSTONE

AT100

Style Number: MAFLMFH10004



Technical Specification

Low Profile Zips
2 Zip Pockets
Contrast Coverstitching Detail
Finished with Binding

Fabric Composition

100% Polyester

Fabric Properties

Airtrap
190gsm



BLACK

SAPPHIRE
GRAPHITE