



# WOMENS FLEECE

---

Fleece is a hugely diverse fabric which boasts many advantages.

Finding the right level of warmth to meet your needs is crucial if you want to stay warm, dry and comfortable. We make finding the fleece that's right for you, easy with our new AT rating system. The higher the rating the heavier weight of fleece. We offer a comprehensive range with optimum comfort and protection in mind.



Offering a variety of weights and qualities means there is something to suit every taste and budget.

## SIZING

All available in: **XS, S, M, L, XL, XXL**





**Technical Specification**

Rib Effect Fleece  
2 Zip Pockets  
Reflective Side Seam Tab  
1/2 Zip Neck

**Fabric Composition**

84% Polyester / 16% Rayon

**Fabric Properties**

Airtrap  
320gsm



**Technical Specification**

Rib Effect  
2 Zip Pockets  
Reflective Side Seam Tab

**Fabric Composition**

84% Polyester / 16% Rayon

**Fabric Properties**

Airtrap  
320gsm



**Technical Specification**

Windproof  
2 Low Profile Zip Pockets  
Trespass Rubber Badges  
Snakeskin Embossed Fleece

**Fabric Composition**

100% Polyester

**Fabric Properties**

Airtrap  
390gsm



**Technical Specification**

Sueded Fleece  
2 Zip Pockets  
Drawcord at Hem

**Fabric Composition**

100% Polyester

**Fabric Properties**

Airtrap  
300gsm





BLACK  
CASSIS

BLUE WAVE  
FAWN

GHOST  
SMOKE

**Technical Specification**

Bonded Microfleece  
2 Zip Pockets  
Tonal Coverstitching Detail  
Drawcord at Hem  
Low Profile Zips  
Finished with Binding

**Fabric Composition**

100% Polyester

**Fabric Properties**

Airtrap  
300gsm



BLACK  
BLACK

WHITE  
BLACK

SANGRIA  
BLACK

**Technical Specification**

Underarm Stretch Panels  
Adjustable Grown On Hood  
Hood in Stretch Fleece  
Finished with Binding  
Drawcord at Hem  
Thumb Holes

**Fabric Composition**

100% Polyester

**Fabric Properties**

Airtrap  
290gsm



CRICKET

SMOKE

WILDBERRY

**Technical Specification**

Long Hair Fleece  
Hooded Style  
Rib Hem and Cuffs  
Full Front Zip Opening

**Fabric Composition**

100% Polyester

**Fabric Properties**

Airtrap  
270gsm



GHOST  
FAWN

SPA  
BLUEWAVE

WILDBERRY  
VIOLA

**Technical Specification**

Melange Fleece  
2 Zip Pockets

**Fabric Composition**

100% Polyester

**Fabric Properties**

Airtrap  
280gsm





**BLUEWAVE SPA**      **FAWN GHOST**      **VIOLA WILDBERRY**

**Technical Specification**

Melange Fleece  
1/2 Zip Neck  
Contrast Low Profile Zip

**Fabric Composition**

100% Polyester

**Fabric Properties**

Airtrap  
280gsm



**BLACK SPOT PRINT FUSCHIA**



**Technical Specification**

Windproof  
2 Zip Pockets  
Contrast CF Zip  
Contrast Drawcord & Toggle

**Fabric Composition**

100% Polyester

**Fabric Properties**

Airtrap  
250gsm



**Y** This colour is available in Youths



**BLACK BERRY BISCUIT GHOST ROSY WATER NAVY SANGRIA**

**Technical Specification**

Anti Pil Polar Fleece  
2 Zip Pockets  
Full Zip  
Drawcord at Hem

**Fabric Composition**

100% Polyester

**Fabric Properties**

Airtrap  
280gsm



**BLACK BLUEWATER MARINE SANGRIA RIOJA**

**Technical Specification**

Drop Liner  
2 Zip Pockets  
Hem Drawcord with Side Adjustment  
Windproof Facing

**Fabric Composition**

100% Polyester

**Fabric Properties**

Dropliner:  
Waterproof 2000mm  
Breathable 3000mvp  
Taped Seams  
Airtrap  
240gsm







**Technical Specification**

Melange Fleece  
 3 Zip Pockets  
 Finished with Binding  
 Woven Fabric Patches on Pockets  
 Low Profile Zips

**Fabric Composition**

100% Polyester

**Fabric Properties**

Airtrap  
 290gsm



**Technical Specification**

Flower Embossed Design  
 2 Concealed Zip Pockets  
 Contrast Embroideries

**Fabric Composition**

100% Polyester

**Fabric Properties**

Airtrap  
 220gsm



**Technical Specification**

2 Zip Pockets  
 Low Profile Zips  
 Finished with Binding

**Fabric Composition**

100% Polyester

**Fabric Properties**

Airtrap  
 290gsm



**Technical Specification**

Anti-Pil Polar Fleece Gilet  
 Cotton Binding around Armholes  
 Drawcord at Hem  
 Trespass Embroidery on Hem  
 2 Zipped Pockets

**Fabric Composition**

100% Polyester

**Fabric Properties**

Airtrap  
 280gsm





BLACK CASSIS SPA

**Technical Specification**

Lightweight  
Soft Touch  
Checked Surface Fabric  
2 Zip Pockets

**Fabric Composition**

100% Polyester  
Checked Fleece

**Fabric Properties**

Airtrap  
230gsm



This colour is available in Youths



BLACK AQUA SLATE GERBERA SLATE

**Technical Specification**

Bonded Microfleece  
Contrast Panels  
Rubber Badges  
3 Zip Pockets  
Form Cut Cuff Tabs

**Fabric Composition**

100% Polyester

**Fabric Properties**

Waterproof 5000mm  
Breathable 5000mvp  
Airtrap  
270gsm



BLACK BLUEWAVE GHOST MAUVE RED

**Technical Specification**

2 Zip Pockets  
Full Zip Front  
Raglan Sleeves  
Flat Cuff

**Fabric Composition**

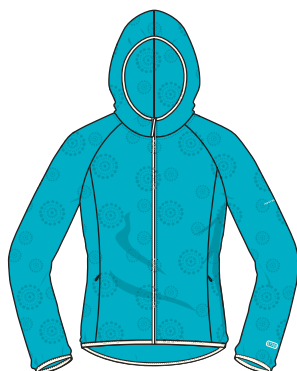
100% Polyester Velvet

**Fabric Properties**

Airtrap  
280gsm



This colour is available in Youths



BARK GHOST GHOST MUSHROOM TURQUOISE GHOST



**Technical Specification**

Embossed Microfleece  
Hooded Style with Contrast  
Stretch Bindings  
2 Concealed Zip Pockets  
Contrast Embroidery

**Fabric Composition**

100% Polyester

**Fabric Properties**

Airtrap  
220gsm





**Technical Specification**

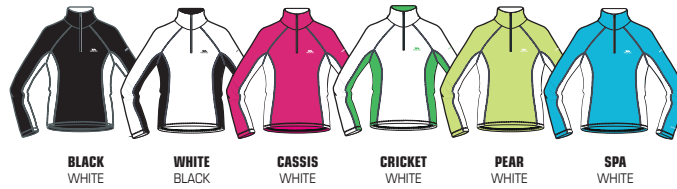
Reversed Tricot Fleece  
Full Zip  
Printed

**Fabric Composition**

100% Polyester

**Fabric Properties**

Airtrap



**Technical Specification**

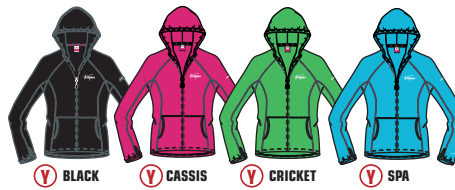
1/2 Zip Neck  
Contrast Panels & Zip

**Fabric Composition**

100% Polyester

**Fabric Properties**

Airtrap  
130gsm



**Technical Specification**

Zip Thru' Hooded Fleece  
Stretch Binding at Cuffs, Pockets and Hood

**Fabric Composition**

100% Polyester

**Fabric Properties**

Airtrap  
130gsm



Ⓢ This colour is available in Youths



**Technical Specification**

1/2 Zip Neck

**Fabric Composition**

100% Polyester

**Fabric Properties**

Airtrap  
130gsm







**BLACK** FUCHSIA  
**WHITE** VIOLA  
**AQUA** TURQUOISE

**Technical Specification**

Hooded Fleece  
Contrast Zips & Binding  
Contrast Coverseam Stitching  
Contrast Flower Embroidery

**Fabric Composition**

100% Polyester

**Fabric Properties**

Airtrap  
190gsm



**WHITE** SILVER  
**AQUA** SILVER



**Technical Specification**

Printed Fleece  
Lightweight  
Soft Touch  
Low Profile Zip

**Fabric Composition**

100% Polyester

**Fabric Properties**

Airtrap  
150gsm



Ⓢ **BLACK** Ⓢ **WHITE** Ⓢ **EARTH** Ⓢ **GERBERA** Ⓢ **TURQUOISE** Ⓢ **WATER** Ⓢ **ROSY**

**Technical Specification**

1/2 Zip  
Trespass Embroidery

**Fabric Composition**

100% Polyester

**Fabric Properties**

Airtrap  
130gsm



Ⓢ This colour is available in Youths



**BLACK** GERBERA  
**WHITE** TURQUOISE

**Technical Specification**

2 Concealed Zip Pockets  
Contrast Top Stitching  
Contrast CF Zip  
Windproof

**Fabric Composition**

100% Polyester

**Fabric Properties**

Airtrap  
135gsm





**BLACK**  
WHITE

**WHITE**  
GERBERA  
BLACK

**CRIMSON**  
WHITE  
BLACK

**TURQUOISE**  
WHITE  
BLACK

**Technical Specification**

Contrast Zips  
Contrast Embroideries  
Small Rubber Logo Badge

**Fabric Composition**

100% Polyester

**Fabric Properties**

Airtrap  
150gsm



**BLACK**  
WHITE

**WHITE**  
AGUA

**GERBERA**  
WHITE

**TURQUOISE**  
WHITE

**Technical Specification**

Contrast Panels  
Contrast Logo's

**Fabric Composition**

100% Polyester

**Fabric Properties**

Airtrap  
130gsm



**BLACK**

**WHITE**

**SORBET**

**Technical Specification**

Half Zip  
High Density Embroidery On Side Panel

**Fabric Composition**

100% Polyester  
Micro Mini Jaquard

**Fabric Properties**

Airtrap  
180gsm

