



WOMENS OUTDOOR

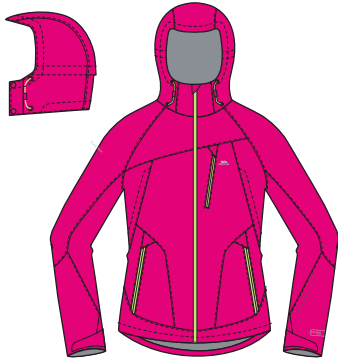
Uncompromising performance jackets and pants for adventure seeking individuals.

This season we introduce our new 3 Layer high performance waterproof 15000mm / breathable 8000mvp outdoor jackets ideal for adventure seeking individuals. Protection in rapidly changing weather conditions for more demanding activities.

Fleece and active layers can be added to create a layering system tailored to an individual's needs.

SIZING

All available in: **XS, S, M, L, XL, XXL**



BLACK
PEAR

CASSIS
PEAR

SPA
PEAR

Technical Specification

Shell - 3 Layer Fabric
Ventilation Zips
Adjustable Zip off Hood
3 Water Repellent Zip Pockets
1 Sleeve Zip Pocket
Hem Drawcord with Side Adjuster
Flat Cuff with Velcro Tab
Back Tail

Fabric Composition

Shell: 100% Polyester
TPU Membrane

Fabric Properties

Waterproof 15000mm
Breathable 8000mvp
Windproof
Taped Seams



BLUEWAVE
SPA
PEAR

CASSIS
PLUM
PEAR

FLINT
BLACK
PEAR

Technical Specification

Shell - 3 Layer Fabric
Water Repellent Ventilation Zips
Adjustable Grown on Hood
4 Water Repellent Zip Pockets
1 Sleeve Zip Pocket
Hem Drawcord with Side Adjuster
Flat Cuff with Velcro Tab
Back Tail

Fabric Composition

Shell: 100% Polyester
TPU Membrane

Fabric Properties

Waterproof 15000mm
Breathable 8000mvp
Windproof
Taped Seams



BLACK

WATER

Technical Specification

Adjustable Concealed Hood
3 Zip Pockets
Inner Pocket
Hem Drawcord with Side Adjustment
Flat Cuff with Velcro Tab
Underarm Zipped Vents

Fabric Composition

Shell: 100% Polyamide -
PU Membrane
Mesh Lining:
100% Polyester
Lining: 100% Polyester

Fabric Properties

Waterproof 10000mm
Breathable 5000mvp
Windproof
Taped Seams



BEETROOT
SHIRAZ

SHIRAZ
SHIRAZ

WASABI
CACTUS

Technical Specification

Adjustable Concealed Hood
4 Heat Sealed Water Repellent Zip Pockets
1 Welt Pocket
Audio Pocket/Channel
Hem Drawcord with Side Adjustment
Water Repellent Front Zip
Stretch Lining

Fabric Composition

Shell: 98% Polyester /
2% Elastane
TPU Membrane
Lining: 90% Polyester /
10% Elastane

Fabric Properties

Waterproof 10000mm
Breathable 5000mvp
Windproof
Taped Seams



BLACK
PASSION PINK
BEETROOT
GRAPHITE

Technical Specification

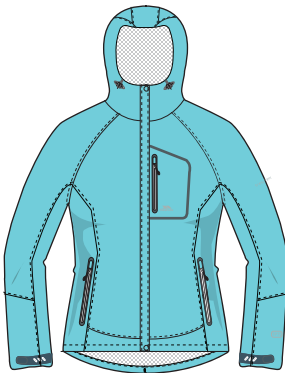
Tricot Lining
Adjustable Grown On Hood
2 Water Repellent Zip Pockets
Audio Pocket/Channel
Communications Pocket
Drawcord at Hem
Flat Cuff with Velcro Tab

Fabric Composition

Shell: 100% Polyamide
PU Coating
Lining: 100% Polyester

Fabric Properties

Waterproof 10000mm
Breathable 5000mvp
Windproof
Taped Seams



AQUA
BEETROOT
GRAPHITE

Technical Specification

Shell: 2 Layer Fabric
Adjustable Grown On Hood
3 Water Repellent Zip Pockets with Welded Tape
Hem Drawcord with Side Adjustment
Flat Cuff with Velcro Tab
Chin Guard

Fabric Composition

Shell: 100% Polyamide
TPU Membrane with Print

Fabric Properties

Waterproof 5000mm
Breathable 5000mvp
Windproof
Taped Seams



QUICK DRY



BLACK
PEBBLE

Technical Specification

Flat Waist with an Adjustable Belt
Tres-Text Dropliner
4 Pockets
Detachable Webbing Belt

Fabric Composition

Shell:
100% Polyamide
Dropliner:
100% Polyester

Fabric Properties

Quick Dry
UPF40+
Dropliner:
Waterproof 3000mm
Breathable 3000mvp
Windproof
Taped Seams



BLACK

Technical Specification

3 Layer Over Trousers
1 Zip Pocket
Full Length Side Zips
Adjustable Leg Tabs
Half Elastic Back Waist
Flat Front Waist with Drawcord

Fabric Composition

100% Polyester
TPU Membrane

Fabric Properties

Waterproof 5000mm
Breathable 5000mvp
Windproof
Taped Seams