



jacket: misha
hat: nissie
gloves: manicure

Womens Rainwear

With a range encompassing performance levels reaching up to 5000mm / 5000mvp, our carefully selected outerwear caters for all levels of use.

Our highly functional waterproof jackets and pants will offer optimum protection when the bad weather rolls in, but are great for day-to-day wear too.

Trespas Rainwear utilises a variety of technical fabrics such as **Tres-tex**[®], for waterproof, windproof and breathable ratings, **Tres-shield**[®], waterproof and windproof fabric and **Coldheat**[®], to insulate and maintain body heat, making them ideal for a wide range of outdoor activities in all temperatures. Other useful features include coated fabrics, welded and water resistant zips, peaked hoods and packable options.

This season we introduce **Misha** waterproof jacket as a fresh take on the classic rain jacket. With tonal, low-profile zips and plenty of practical features, this waterproof, breathable and windproof addition will instantly be an outdoor favourite and a key piece this season.

SIZING

All available in: XS, S, M, L, XL, XXL

Selected styles available in XXS



long length jacket: chitter



jacket: mel

Style Number: FAJK31G20002



Technical Specification

Mesh Lined with Detachable Inner Fleece
 2 Front Zip Pockets
 Adjustable Cuffs
 Adjustable Concealed Hood
 Hem Drawcord
 Inner Fleece
 260gsm Microfleece
 Anti-Pill and Brushed on Both Sides

Fabric Composition

Shell: 100% Polyamide
 Ripstop with PU Coating
 Lining: 100% Polyester Mesh
 and Embossed Lining
 Inner Fleece: 260gsm
 2 Sides Brushed Anti Pill

Fabric Properties

Waterproof 2000mm
 Breathable 3000mm
 Windproof
 Taped Seams



BLACK
BLACK

SPA
BLACK

Style Number: FAJK31F20006



Technical Specification

Adjustable Concealed Hood
 2 Pockets
 Hem Drawcord
 Elasticated Cuff with
 Adjustable Velcro Tab
 Detachable Inner Fleece

Fabric Composition

Shell: 100% Polyester
 PVC Coating
 Lining: 100% Polyester
 Inner Fleece Jacket:
 100% Polyester
 240gsm

Fabric Properties

Waterproof 3000mm
 Windproof
 Taped Seams



BLACK

CRIMSON

POOL BLUE

Style Number: FAJK31G10005



Technical Specification

Adjustable Concealed Hood
 2 Zip Pockets
 Drawcord at Hem
 Elasticated Cuff with Velcro Tab
 240gsm Microfleece

Fabric Composition

Shell: 100% Polyester
 Pongee PVC
 Lining: 100% Polyamide
 Fleece: 100% Polyester

Fabric Properties

Waterproof 3000mm
 Windproof
 Taped Seams



GERBERA
SHERBERT

TURQUOISE
AQUA

VIOLA
LAVENDER

Style Number: FAJK31H20001



Technical Specification

Adjustable Zip Off Hood
 2 Zip Pockets
 Flat Cuff with Velcro Tab
 Detachable Inner Padded Jacket

Fabric Composition

Shell: 100% Polyester PU Coating
 Lining: 100% Polyester
 Inner: 100% Polyester
 Padding: 100% Polyester

Fabric Properties

Waterproof 5000mm
 Windproof
 Taped Seams



BLACK
BLACK INNER

FAWN
FAWN INNER

WILDBERRY
WILDBERRY INNER

jacket: qikpac jacket
trousers: retold
gloves: kurulum



RAINWEAR | MIYAKE JACKET TP75

Style Number: FAJKRAF20010



Technical Specification

Shell
Mesh Lining
Adjustable Grown On Hood
2 Pockets
Inner Pocket
Hem Drawcord with Side Adjustment
Flat Cuff with Velcro Tab

Fabric Composition

Shell: 100% Polyamide
PU Coating
Mesh: 100% Polyester
Lining: 100% Polyester

Fabric Properties

Waterproof 5000mm
Breathable 5000mvp
Windproof
Taped Seams



BLACK



SANGRIA



PEAR

RAINWEAR | MIYAKE TROUSERS TP75

Style Number: FABTRAF20001



Technical Specification

Mesh/Polyester Lining
Front Flat Waist with Elastic Back & Belt Loops
Side Ankle Waterproof Zips
Front Fly Opening
2 Pockets

Fabric Composition

Shell: 100% Polyamide PU Coating
Mesh: 100% Polyester
Lining: 100% Polyester

Fabric Properties

Waterproof 5000mm
Breathable 5000mvp
Windproof
Taped Seams



BLACK

RAINWEAR | TUTULA JACKET TP75

Style Number: FAJKRAF20011



Technical Specification

Shell
Mesh Lining
Adjustable Concealed Hood
2 Pockets
Inner Pocket
Hem Drawcord with Side Adjustment
Flat Cuff with Velcro Tab

Fabric Composition

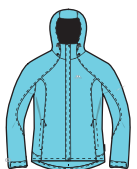
Shell: 100% Polyester
PU Coating
Mesh: 100% Polyester
Lining: 100% Polyester

Fabric Properties

Waterproof 2000mm
Breathable 3000mvp
Windproof
Taped Seams



BLACK



POOL BLUE



SANGRIA

RAINWEAR | TUTULA TROUSERS TP75

Style Number: FABTRAF20002



Technical Specification

Polyester Lining
Elasticated Waist with Drawcord
2 Pockets
Adjustable Leg Tabs

Fabric Composition

Shell: 100% Polyester PU Coating
Mesh: 100% Polyester
Lining: 100% Polyester

Fabric Properties

Waterproof 2000mm
Breathable 3000mvp
Windproof
Taped Seams



BLACK

RAINWEAR | PACKA JACKET TP75

Style Number: MAJKRAB30001 /
MCJKRAB30002



Technical Specification

Unisex
Adjustable Concealed Hood
2 Welt Pockets
Full Elasticated Cuff
Jacket Packs into Mesh Pouch

Fabric Composition

Shell: 100% Polyamide
PU Coating

Fabric Properties

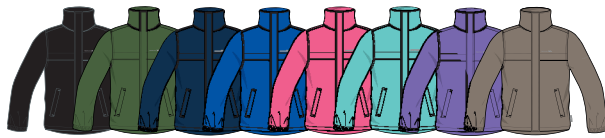
Waterproof 3000mm
Breathable 3000mvp
Windproof
Taped Seams

Available in XXL



Unisex Size Guide

XS	S	M	L	XL	XXL
XXS	XS	S	M	L	XL



BLACK FERN NAVY ROYAL SORBET TROPICAL VIOLA PRALINE

RAINWEAR | PACKA TROUSERS TP75

Style Number: MABTRAB30001 /
MCBTRAB30002



Technical Specification

Unisex
3 Pocket Openings
(No Pocket Bags)
Full Elasticated Waist
Trousers Packs into Mesh Pouch

Fabric Composition

Shell: 100% Polyamide
PU Coating

Fabric Properties

Waterproof 3000mm
Breathable 3000mvp
Windproof
Taped Seams

Available in XXL



Unisex Size Guide

XS	S	M	L	XL	XXL
XXS	XS	S	M	L	XL



BLACK NAVY

RAINWEAR | QIKPAC JACKET TP75

Style Number: UAJKRAI10001 /
UCJKRAI10003



Technical Specification

Unisex Shell Jacket
Adjustable Grown on Hood
2 Zip Pockets
Full Elasticated Cuff
Full Length Internal Front Storm Flap
Drawcord at Hem
Ventilated Back Yoke
Contrast Zips - Low Profile
Jacket Packs into Pouch

Fabric Composition

Shell: 100% Polyamide
PU Coating

Fabric Properties

Waterproof 5000mm
Breathable 5000mvp
Windproof
Taped Seams



Unisex Size Guide

XS	S	M	L	XL	XXL
XXS	XS	S	M	L	XL



BLACK LEAF COBALT LEAF LEAF FLINT GRENADINE FLINT SASPARILLA FLINT

RAINWEAR | QIKPAC PANT TP75

Style Number: UABTRAI10001



Technical Specification

Unisex
Shell
3 Pocket Openings (No Pocket Bags)
Full Elasticated Waist
Hem Stud Adjusters
Packs into Mesh Pouch

Fabric Composition

Shell: 100% Polyamide
PU Coating

Fabric Properties

Waterproof 5000mm
Breathable 5000mvp
Windproof
Taped Seams



BLACK FLINT

RAINWEAR | HYBRID

TP75

Style Number: FAJKRAH10014



Technical Specification

Cycling Jacket
Low Profile Zips
Packs into Back Pocket
Reflective Prints
Printed Binding at Cuffs and Hem

Fabric Composition
Shell: 100% Polyester
PU Coating

Fabric Properties
Waterproof 3000mm
Breathable 3000mvp
Windproof



HI-VIS YELLOW
GRAPHITE

SASPARILLA
GRAPHITE

RAINWEAR | MEMPHIS

TP75

Style Number: FAJKRAI10010



Technical Specification

Contrast Mesh Lining
Adjustable Concealed Hood
2 Zip Pockets
Contrast Trimmings
Reflective Prints
Stretch Bindings
Curved Back Hem
Ventilation at Front & Back

Fabric Composition

Shell: 100% Polyester
Jaquard Grid PU Coating
Lining: 100% Polyester

Fabric Properties

Waterproof 5000mm
Breathable 5000mvp
Windproof
Taped Seams



BLACK
SASPARILLA / PEAR

SASPARILLA
BLACK / PEAR

RAINWEAR | COMPAC MAC

TP75

Style Number: FAJKRAI10011

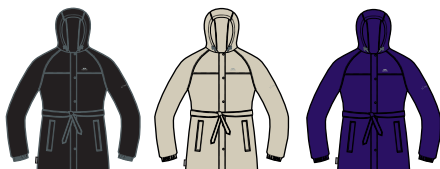


Technical Specification

Shell
Adjustable Grown on Hood
Front Pockets
Full Elasticated Cuff
Tie Belt at Waist
Ventilated Back Yoke
Packs into Pouch

Fabric Composition
Shell: 100% Polyamide
PU Coating

Fabric Properties
Waterproof 3000mm
Breathable 3000mvp
Windproof
Taped Seams



BLACK

FAWN

WILDBERRY

RAINWEAR | NUMBERED

TP75

Style Number: FAJKRAG20003



Technical Specification

- Adjustable Concealed Hood
- 2 Zip Pockets
- 1 Water Repellent Zip Pocket
- Inner Pocket
- Drawcord at Hem
- Elasticated Cuff with Velcro Tab
- Contrast Colour Facings

Fabric Composition

- PU Coating
- Lining: 100% Polyamide

Fabric Properties

- Waterproof 2000mm
- Breathable 3000mm
- Windproof
- Taped Seams



BLACK
CASSIS

BLUE WAVE
WILDBERRY

CASSIS
BLACK

WILDBERRY
BLUE WAVE

RAINWEAR | BOLTS

TP75

Style Number: FAJKRAG10030



Technical Specification

- Mesh Lining
- Adjustable Concealed Hood
- 4 Zip Pockets
- Inner Pocket
- Drawcord at Hem
- Elasticated Cuff with Velcro Tab

Fabric Composition

- Shell: 100% Polyester
- PU Coating
- Mesh: 100% Polyester

Fabric Properties

- Waterproof 2000mm
- Breathable 3000mm
- Windproof
- Taped Seams



BLACK

CASSIS

WILDBERRY

RAINWEAR | MISHA

TP75

Style Number: FAJKRAI20005



Technical Specification

- Shell
- Soft Tricot Lining
- Adjustable Grown On Hood
- Stretch Binding at Hood and Cuffs
- Contrast Zips - Low Profile
- 3 Zip Pockets
- Inner Storm Flap
- Ventilated Back Yoke

Fabric Composition

- Shell: 100% Polyamide
- PU Coating
- Lining: 100% Polyester

Fabric Properties

- Waterproof 5000mm
- Breathable 5000mvp
- Windproof
- Taped Seams



FLINT
PANSY

MALLARD
AQUATIC

RAINWEAR | PIRATA

TP75

Style Number: FAJKRAI10008



Technical Specification

- Shell
- Mesh Lined
- Adjustable Concealed Hood
- 4 Zip Pockets
- Low Profile Zips
- Hem Drawcord
- Elasticated Cuffs with Tab Adjuster

Fabric Composition

- Shell: 100% Polyamide
- Ripstop PU Coating
- Lining: 100% Polyester

Fabric Properties

- Waterproof 2000mm
- Breathable 3000mvp
- Windproof
- Taped Seams



AQUA

SASPARILLA

WILDBERRY

RAINWEAR | MEL

TP75

Style Number: FAJKRAI20001



Technical Specification

- Lightly Padded
- Adjustable Grown On Hood
- 2 Water Repellent Zip Pockets
- Inner Zip Pocket
- Hem Drawcord
- Adjustable Elastic Cuff

Fabric Composition

- Shell: 100% Polyester Pongee with a TPU Membrane Coating
- Lining: 100% Polyester
- Padding: 100% Polyester

Fabric Properties

- Waterproof 3000mm
- Breathable 3000mvp
- Windproof
- Taped Seams



BLACK
PANSY

RAINWEAR | KONA

TP75

Style Number: FAJKRAG20011



Technical Specification

- Lightly Padded
- Microfleece Lining at Back
- Adjustable Concealed Hood
- 2 Zip Pockets
- Inner Zip Pocket
- Drawcord at Hem
- Elasticated Cuff with Velcro Tab

Fabric Composition

- Shell: 100% Polyester PU Coated
- Lining: 100% Polyester Fleece
- Padding: 100% Polyester

Fabric Properties

- Waterproof 2000mm
- Breathable 3000mvp
- Windproof
- Taped Seams



CASSIS

SPA BLUE

WILDBERRY

RAINWEAR | PIXIE

TP75

Style Number: FAJKRAH10016



Technical Specification

- Lightly Padded
- Super Soft Fleece Lining
- Longer Length
- Adjustable Grown On Hood
- Large Front Hand Pockets
- Flat Cuff with Stud Tab

Fabric Composition

- Shell: 100% Polyester PU Coating
- Lining: 100% Polyester
- Padding: 100% Polyester

Fabric Properties

- Waterproof 3000mm
- Breathable 3000mvp
- Windproof
- Taped Seams



BLACK
STONE



BARK
STONE



GHOST
STONE

RAINWEAR | JILLY

TP50

Style Number: FAJKRAH10018



Technical Specification

- Printed Lining
- 2 Zip Pockets
- Flat Cuff with Velcro Tab
- Detachable Adjustable Belt

Fabric Composition

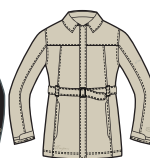
- Shell: 100% Polyester PU Coating
- Lining: 100% Polyamide Printed

Fabric Properties

- Waterproof 5000mm
- Windproof
- Taped Seams



BLACK



FAWN

Style Number: FAJKRAF20004



Technical Specification

Padded
Adjustable Zip Off Hood
2 Zip Pockets
Inner Pocket
Hem Drawcord with Side Adjustment
Elasticated Cuff with Velcro Tab

Fabric Composition

Shell: 100% Polyester
Microfibre PU Coating
Lining: 100% Polyester
Padding: 100% Polyester

Fabric Properties

Waterproof 5000mm
Windproof
Taped Seams



BLACK SLATE

AQUA SLATE

GERBERA SLATE

Style Number: FAJKRAE20028



Technical Specification

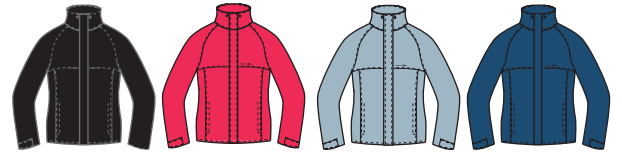
Diamond Quilted Padding
2 Zip Pockets
Inner Pocket
Hem Drawcord with Side Adjusters
Cuff Tab with Velcro Fastening
Windproof Facing
Adjustable Concealed Hood

Fabric Composition

Shell: 100% Polyester
Microfibre PVC
Lining: 100% Polyester
Padding: 100% Polyester

Fabric Properties

Waterproof 5000mm
Windproof
Taped Seams



BLACK

CORAL

OCEAN

PRUSSIAN

Style Number: FAJKRAH20003



Technical Specification

Lightly Padded
Microfleece Lining
Adjustable Zip Off Hood
Detachable Fur Trim Hood
3 Zip Pockets
Inner Zip Pocket
Drawcord at Hem
Elasticated Cuff with Velcro Tab

Fabric Composition

Shell: 100% Polyester
Pongee PVC Coating
Lining: 100% Polyester
Padding: 100% Polyester

Fabric Properties

Waterproof 3000mm
Windproof
Taped Seams



BLACK

AUBERGINE

Style Number: FAJKRAI10003



Technical Specification

Shell
Contrast Mesh Lining
Grown on Hood
Chunky Contrast Zips
3 Zip Pockets
Inner Storm Flap
Elasticated Cuff with Tab Adjuster

Fabric Composition

Shell: 100% Polyester
Microfibre PVC
Lining: 100% Polyester

Fabric Properties

Waterproof 5000mm
Windproof
Taped Seams



AUBERGINE AQUA

AQUA AQUA

GRANITE AQUA

RAINWEAR | CORAL REIFF

TP50

Style Number: FAJKRAA30001



Technical Specification

Shell
 Mesh Lining
 4 Zip Pockets
 Hem and Waist Drawcord
 Elasticated Cuff with Velcro Tab
 Windproof Facing
 Adjustable Detachable Hood

Fabric Composition

Shell: 100% Polyester
 Microfibre PVC
 Lining: 100% Polyester

Fabric Properties

Waterproof 5000mm
 Windproof
 Taped Seams

Available in XXXL



BLACK BLUE WATER CORAL NAVY POPPY RED THISTLE

RAINWEAR | ANNE

TP50

Style Number: FAJKRAH10004



Technical Specification

Mesh Lining
 Adjustable Concealed Hood
 2 Zip Pockets
 Contrast Inner Facings
 Adjustable Drawcord at Waist & Hem
 Elasticated Cuff with Velcro Tab

Fabric Composition

Shell: 100% Polyester
 Microfibre PVC Coating
 Mesh: 100% Polyester
 Lining: 100% Polyamide

Fabric Properties

Waterproof 5000mm
 Windproof
 Taped Seams



GHOST SMOKE TEAL WILDBERRY LAVENDER

RAINWEAR | MINETTE

TP50

Style Number: FAJKRAI10005



Technical Specification

Shell
 Mesh Lining
 Adjustable Concealed Hood
 2 Zip Pockets
 Inner Zip Pocket
 Hem and Waist Drawcord
 Elasticated Cuff with Tab Adjuster

Fabric Composition

Shell: 100% Polyester
 Microfibre PVC
 Lining: 100% Polyester

Fabric Properties

Waterproof 5000mm
 Windproof
 Taped Seams



BLUSH PARCHMENT AQUA GRANITE

Style Number: FAJKRAF20006 / FCJKRAG20003



Technical Specification

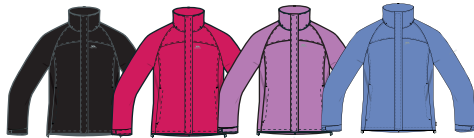
Adjustable Concealed Hood
2 Pockets
Hem Drawcord
Elasticated Cuff with Adjustable Velcro Tab

Fabric Composition

Shell: 100% Polyester
PVC Coating
Mesh Lining: 100% Polyester

Fabric Properties

Waterproof 3000mm
Windproof
Taped Seams



BLACK CRIMSON HEATHER COOL BLUE

Style Number: FAJKRAI10002



Technical Specification

Shell
Mesh Lining
Adjustable Concealed Hood
2 Zip Pockets
Hem Drawcord
Elasticated Cuff with Tab Adjuster

Fabric Composition

Shell: 100% Polyester
PVC Coating
Lining: 100% Polyester

Fabric Properties

Waterproof 3000mm
Windproof
Taped Seams



SPA TEAL WILDBERRY LAVENDER PINK DAHLIA RASPBERRY TONE

Style Number: FAJKRAG10029



Technical Specification

Mesh Lining
Adjustable Concealed Hood
2 Zip Pockets
Inner Pocket
Drawcord at Hem
Elasticated Cuff with Velcro Tab

Fabric Composition

Shell: 100% Polyester
PU Coating
Mesh: 100% Polyester

Fabric Properties

Waterproof 2000mm
Windproof
Taped Seams



BLACK CASSIS CASSIS BLACK WILDBERRY BLUEWAVE



jacket: chitter
fleece: kersey
jeans: tulisa

RAINWEAR | CHITTER

TP50

Style Number: FAJKRAI20003



Technical Specification

Lightly Padded
Soft Fur Fleece Lining
Detachable Zip Off Hood
7 Pockets
Side Waist Elastic
Adjustable Flat Cuff

Fabric Composition

Shell: 100% Polyester
Microfibre PU Coating
Lining: 100% Polyester
Padding: 100% Polyester

Fabric Properties

Waterproof 5000mm
Windproof
Taped Seams



FLINT
SMOKE



KHAKI
SANDY



MALLARD
SMOKE

RAINWEAR | CLOUDY

TP50

Style Number: FAJKRAI20002



Technical Specification

Lightly Padded
Full Front Zip
Inner Storm Flap
Adjustable Zip Off Hood
2 Pockets
Adjustable Flat Cuff

Fabric Composition

Shell: 100% Polyamide Dobby
PU Coating
Lining: 100% Polyester
Padding: 100% Polyester

Fabric Properties

Waterproof 3000mm
Windproof
Taped Seams



NAVY TONE
NAVY GINGHAM



POPPY RED
NAVY GINGHAM

RAINWEAR | MANHATTAN

TP50

Style Number: FAJKRAH20006



Technical Specification

Lightly Padded
Printed Lining
2 Zip Pockets
Detachable Zip Off Hood
Flat Cuff with Velcro Tab

Fabric Composition

Shell: 100% Polyester
Microfibre PVC Coating
Lining: 100% Polyester
Padding: 100% Polyester

Fabric Properties

Waterproof 5000mm
Windproof
Taped Seams



BLACK



AUBERGINE

RAINWEAR | MOODY

TP50

Style Number: FAJKRAH20004



Technical Specification

Lightly Padded
Fleece Lining
2 Zip Pockets
4 Pockets
Waist Drawcord
Hem Drawcord
Detachable Fur Trim Hood
Flat Cuff with Velcro Tab

Fabric Composition

Shell: 100% Polyester
Microfibre PU Coating
Lining: 100% Polyester
Padding: 100% Polyester

Fabric Properties

Waterproof 5000mm
Windproof
Taped Seams



BLACK



AUBERGINE



SANDY