

jacket: martine
jeans: tulisa
gloves: touch



Womens **Down**

Look so good, feel so warm and snug. Down is the natural solution for freezing winter days.

Compressible, lightweight and breathable, the three dimensional structure of down plumules creates an airy filling that will regulate your body heat and can take you from the slopes to the street in comfort.

New for this season is **Martine**, an ultra lightweight jacket which packs down small for extreme functionality - warmth on the go.

Our best sellers are still with us, including **Cocoon**, beautifully fitted and perfect for very cold locations.

SIZING

All available in: XS, S, M, L, XL, XXL

Selected styles available in XXX



jacket: martine



long length jacket: enclosed

DOWN | MARTINE

TP50

Style Number: FAJFSKI20001

Technical Specification

Ultra Lightweight Jacket
Grown on Hood
2 Concealed Zip Pockets
Low Profile Front Zip
Stuff Sack in Pocket
Matching Binding at Hood,
Hem and Cuffs

Fabric Composition

80% Down / 20% Feather
Shell: 100% Polyamide
Lining: 100% Polyamide
Downproof Lining



BLACK

MALLARD

WINE

DOWN | COCOON

TP50

Style Number: FAJFSKF20048

Technical Specification

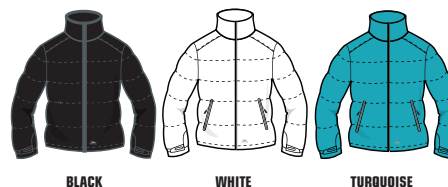
50% Down / 50% Feather
Downproof Lining
Adjustable Zip Off Hood
2 Water Repellent Zip Pockets
Inner Pocket
Drawcord at Hem
Flat Cuff with Velcro Tab
Water Repellent Front Zip

Fabric Composition

Shell: 100% Polyamide
PU Coating
Lining: 100% Polyester

Fabric Properties

Shell: 100% Polyamide
PU Coating
Lining: 100% Polyester



BLACK

WHITE

TURQUOISE

DOWN | JALINTA

TP50

Style Number: FAJFSKG20026

Technical Specification

Downproof Lining
Adjustable Zip Off Hood
2 Zip Pockets
Inner Pocket
Elasticated Cuffs and Hem

Fabric Composition

Shell: 100% Polyamide
PU Coating
Lining: 100% Polyester
Wadding: 80% Down /
20% Feather

Fabric Properties

Water Resistant 600mm



BLACK

DOWN | AMZIE

TP50

Style Number: FAJFSKG20028

Technical Specification

Downproof Lining
Grown on Hood
2 Zip Pockets
Inner Pocket
Flat Cuff with Inner Knitted Cuff

Fabric Composition

Shell: 100% Polyamide
PU Coating
Lining: 100% Polyamide
Wadding: 80% Down /
20% Feather

Fabric Properties

Water Resistant 600mm



WHITE
CASSIS

CASSIS
SPA

PEAR
WILDBERRY

SPA
CASSIS

DOWN | CINDERS

TP50

Style Number: FAJKSKH20061

Technical Specification

Grown on Hood
2 Low Profile Zip Pockets
Low Profile Front Zip
Inner Pocket
Printed Lining
Contrast Binding at Hem and Cuffs

Fabric Composition

80% Down / 20% Feather
Shell: 100% Polyamide
PU Coating
Lining: 100% Polyester
Downproof Lining

Fabric Properties

Water Resistant 500mm



BLACK



AEGEAN BLUE



PANSY



WILDBERRY

DOWN | ENCLOSED

TP50

Style Number: FAJKCAH20001

Technical Specification

Longer Length
Adjustable Zip Off Hood
2 Side Entry Pockets
2 Patch Pockets
Inner Pocket
Drawcord at Hem
Flat Cuff with Inner Knitted Cuff

Fabric Composition

50% Down / 50% Feather
Shell: 100% Polyamide
Taslan Oxford
PU Coating
Lining: 100% Polyester
Downproof Lining

Fabric Properties

Water Resistant 500mm



BLACK



AUBERGINE



VINE

DOWN | LADNA

TP50

Style Number: FAJKCAE20009

Technical Specification

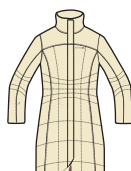
Adjustable Zip Off Hood
2 Zip Pockets
Inner Pocket
Fake Fur Trim
Long Length Style
Two Way CF Zip

Fabric Composition

Shell: 100% Polyester
Lining: 100% Polyester
Wadding: 50% Down / 50% Feather



BLACK



PARCHMENT



WILDBERRY

Style Number: FAJGIF20001

Technical Specification

50% Down / 50% Feather
Downproof Lining
2 Water Repellent Zip Pockets
Inner Pocket
Drawcord at Hem
Water Repellent Front Zip

Fabric Composition

Shell: 100% Polyamide PU Coating
Lining: 100% Polyester

Fabric Properties

Water Resistant 500mm



BLACK



WHITE

Style Number: FAJGIG20002

Technical Specification

Downproof Lining
Low Profile Zips
2 Zipped Pockets
Elasticated Armhole
Drawcord at Hem

Fabric Composition

Shell: 100% Polyester
Lining: 100% Polyester
Wadding: 50% Down / 50% Feather



BLACK



WHITE



SPA

Style Number: FAJGII20001

Technical Specification

Ultra Lightweight Gilet
2 Concealed Zip Pockets
Low Profile Front Zip
Stuff Sack in Pocket
Matching Binding at Hem and Armhole

Fabric Composition

80% Down / 20% Feather
Shell: 100% Polyamide
Lining: 100% Polyamide
Downproof Lining



BLACK



WINE



MALLARD



down gilet: leyner
hat: antarctic
gloves: manicure
hoody: sanders
scarf: flourish