



WOMENS  
**ADVENTURE**

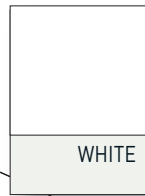
ACTIVE TOP: HEARTRATE  
SHORTS: CRAVING  
HELMET: CRANKSTER



top: velo  
top: heartrate  
shorts: craving  
jacket: hybrid



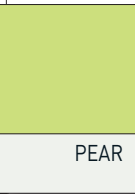
BLACK



WHITE



SASPARILLA



PEAR



top: tailwind top: sunlight  
shorts: craving pant: shoot  
hydration pack: zumba



active top: tailwind  
3/4 pants: shoot



jacket: hybrid  
shorts: craving



active top: velo  
shorts: craving



**BLACK**  
GRAPHITE

**SASPARILLA**  
BLACK

**SPA**  
GRAPHITE

**Technical Specification**

1/2 Zip Neck  
 Contrast Flatlock Stitching  
 Contrast Print  
 Elastic Binding at Cuff and Hem

**Fabric Composition**

92% Polyester /  
 8% Spandex

**Fabric Properties**

Wicking  
 Quick Dry

**DUOSKIN QUICKDRY**



ACTIVE TOP: SUNLIGHT  
 3/4 PANTS: SHOOT  
 TRAINERS: DUNA



**BLACK** GRAPHITE  
**SASPARILLA** GRAPHITE  
**SPA** BLACK  
**WHITE** GRAPHITE

QUICKDRY

**Technical Specification**

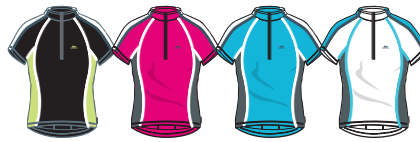
Sleeveless Top  
Stand Up Collar  
1/2 Zip  
Contrast Binding around Collar and Armholes  
Contrast Panels and Flatlock Stitching  
Drop Tail at Back Panel  
Back Pockets  
Reflective Print

**Fabric Composition**

100% Polyester

**Fabric Properties**

Quick Dry



**BLACK** PEAR  
**SASPARILLA** GRAPHITE  
**SPA** GRAPHITE  
**WHITE** GRAPHITE

QUICKDRY

**Technical Specification**

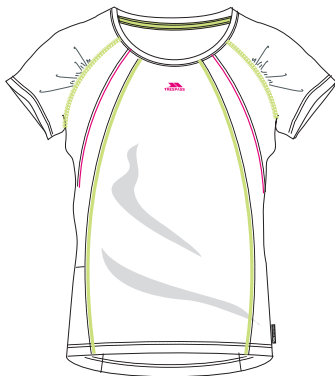
Stand Up Collar  
1/2 Zip  
Short Sleeves  
Contrast Flatlock Stitching  
Contrast Panels and Flatlock Stitching  
Drop Tail at Back Panel  
Back Pockets  
Reflective Piping and Print

**Fabric Composition**

100% Polyester

**Fabric Properties**

Quick Dry



**GRAPHITE** SPA  
**SASPARILLA** PEAR  
**SPA** GRAPHITE  
**WHITE** SASPARILLA

QUICKDRY

**Technical Specification**

Round Neck  
Short Sleeves  
Contrast Flatlock Stitching and Piping Detail  
Concealed Side Pocket

**Fabric Composition**

100% Polyester

**Fabric Properties**

Quick Dry



**BLACK**

**Technical Specification**

Long Length Short  
Flat Waist with  
Side Velcro Tab Adjuster  
Reinforced Inner Leg Gusset  
Stretch Panel at Back Waist  
3 Zip Pockets  
Side Leg Bellow Pocket  
Reflective Logo  
Hem Velcro Tab Adjuster

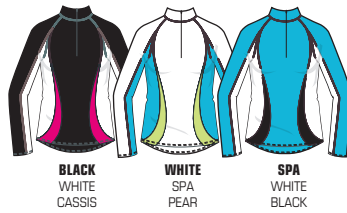
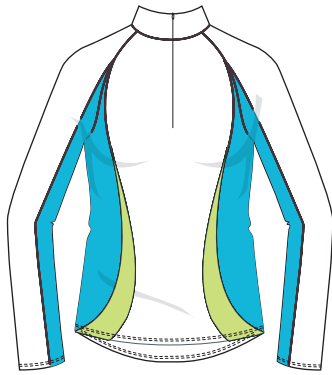
**Fabric Composition**

100% Polyamide Ripstop  
Stretch: 100% Polyester  
Gusset: 100% Polyamide

**Fabric Properties**

UPF 40+  
Quick Dry

U.V. QUICKDRY



**Technical Specification**

Long Sleeves  
Half Zip  
Contrast Panels  
Reflective Printed Logo

**Fabric Composition**

91% Polyamide /  
9% Elastane

**Fabric Properties**

Wicking Finish  
Quick Dry  
Antibacterial Coating

DUOSKIN *antibacterial*



**Technical Specification**

Long Sleeves  
Half Zip  
Contrast Panels  
Reflective Printed Panels & Logos

**Fabric Composition**

Main: 88% Polyester /  
12% Elastane  
Side Panels: 90% Polyester /  
10% Elastane

**Fabric Properties**

Antibacterial finish  
Wicking  
Quick Dry

DUOSKIN *antibacterial*



**Technical Specification**

Long Sleeves  
Round Neck  
Contrast Panels  
Contrast Print

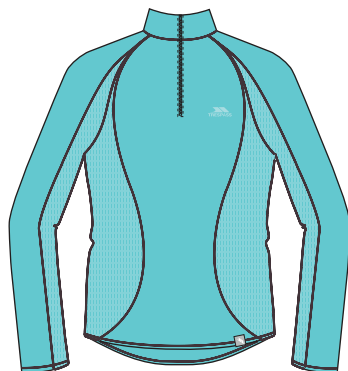
**Fabric Composition**

100% Polyester

**Fabric Properties**

Quick Dry

QUICKDRY *antibacterial*



**Technical Specification**

Long Sleeves  
Half Zip  
Contrast Panels in Reverse Side of Fabric

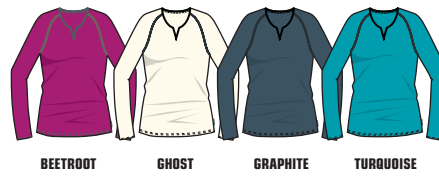
**Fabric Composition**

100% Polyester

**Fabric Properties**

Wicking  
Quick Drying

DUOSKIN



**Technical Specification**

Long Sleeves  
Round Neck  
Contrast Print

**Fabric Composition**

100% Polyester

**Fabric Properties**

Quick Dry

QUICKDRY



**Technical Specification**

Long Sleeves  
Half Zip Neck  
Zip Fastening MP3 Player Pocket in Front Seam  
Contrast Panels  
Reflective Printed Logo

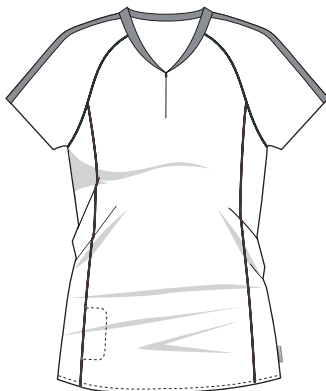
**Fabric Composition**

100% Polyester

**Fabric Properties**

Wicking  
Quick Drying

DUOSKIN



**Technical Specification**

Short Sleeves  
Half Zip Neck  
Zip Fastening MP3 Player Pocket in Front Seam  
Contrast Panels  
Reflective Printed Logo

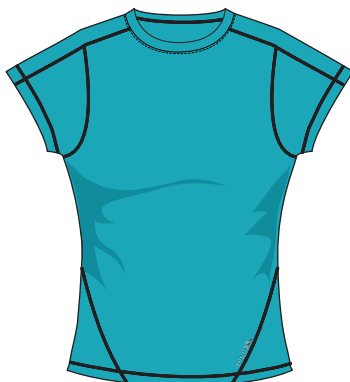
**Fabric Composition**

100% Polyester

**Fabric Properties**

Wicking  
Quick Drying

DUOSKIN



**Technical Specification**

Short Sleeves  
Round Neck  
Reflective Prints  
Flatlock Stitching

**Fabric Composition**

100% Polyester

**Fabric Properties**

Wicking  
Quick Drying

DUOSKIN



BEETROOT      GHOST      GRAPHITE      TURQUOISE

**Technical Specification**

Short Sleeves  
Round Neck  
Contrast Print

**Fabric Composition**

100% Polyester

**Fabric Properties**

Quick Dry

QUICKDRY



BLACK      WHITE      NAVY      PURPLE      SHIRAZ

**Technical Specification**

Short Sleeve Top  
Round Neck  
Flat Lock Seams

**Fabric Composition**

100% Polyester

**Fabric Properties**

Quick Dry

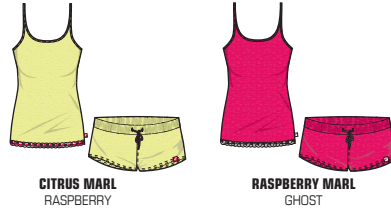
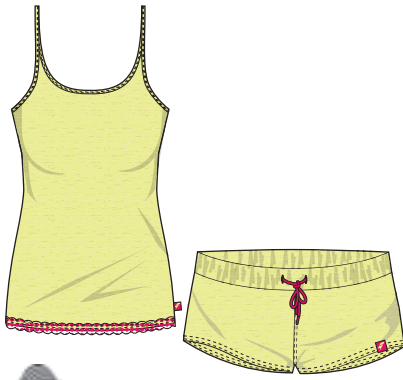
QUICKDRY *antibacterial*



ACTIVE TOP: TEMPO  
3/4 PANTS: STRUT  
TRAINERS: DUNA  
SOCKS: OCCO

MERINO WOOL | SASHAY | FABLSEH10001

TP100



**Technical Specification**

Vest & Short Set  
 Contrast Lace Trim along Hem of Vest  
 Contrast Shoelace Style Drawcord at Waist

**Fabric Composition**

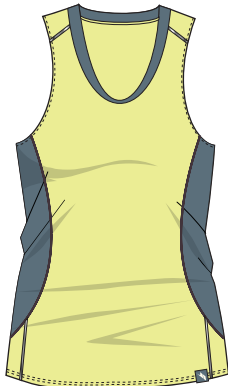
100% Merino Wool

**Fabric Properties**

Natural Wicking  
 Antibacterial Properties

ACTIVE | TEMPO | FABLTPH10004

TP75



**Technical Specification**

Vest Top  
 Flatlock Seams for Comfort  
 Reflective Piping at Shoulder & Waist  
 Reflective Printed Logos

**Fabric Composition**

90% Polyamide /  
 10% Elastane

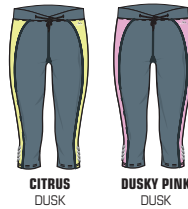
**Fabric Properties**

Wicking Finish  
 Quick Dry  
 Antibacterial Coating

DUOSKIN *antibacterial*

ACTIVE | STRUT | FABLTH10001

TP75



**Technical Specification**

3/4 Length  
 Drawcord at Waist  
 Zip Fastening Vent/ Pocket at Back Waistband  
 Flatlock Seams for Comfort  
 Reflective Printed Logos

**Fabric Composition**

90% Polyamide  
 10% Elastane

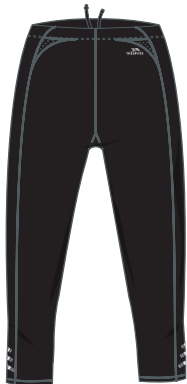
**Fabric Properties**

Wicking Finish  
 Quick Dry  
 Antibacterial Coating

DUOSKIN *antibacterial*

ACTIVE | SHOOT | FABLBTG20001

TP75



**Technical Specification**

3/4 Length  
 Drawcord at Waist  
 Zip Fastening Vent/ Pocket at Back Waist  
 Reflective Printed Logos

**Fabric Composition**

91% Polyamide /  
 9% Elastane

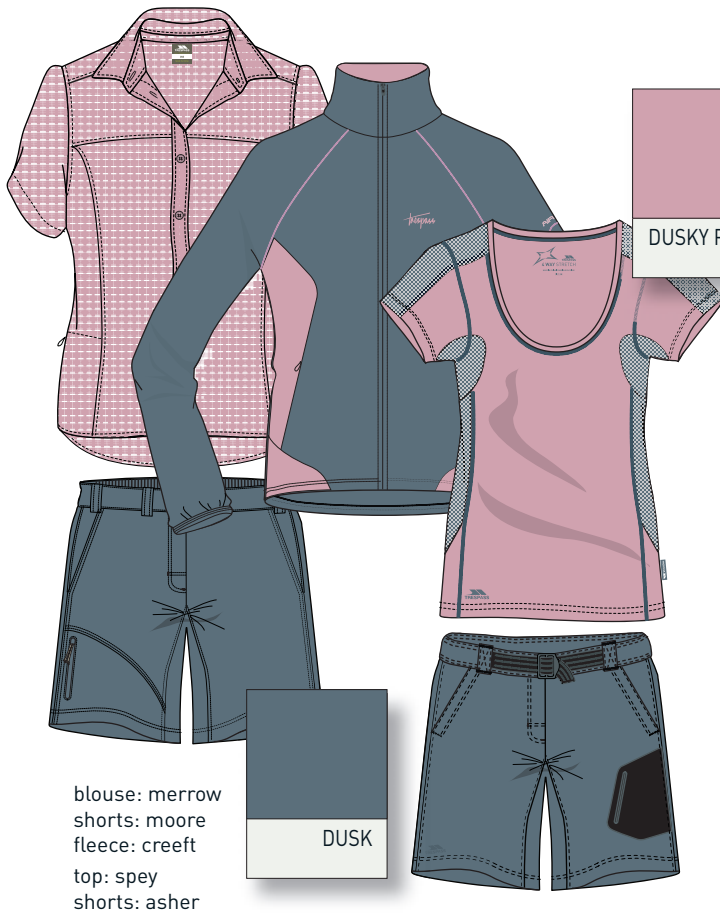
**Fabric Properties**

Antibacterial Finish  
 Wicking  
 Quick Drying

DUOSKIN *antibacterial*



POLO TOP: SHOCK  
TROUSERS: ELGOL  
HIKING BOOTS: TUTTI  
MAPCASE: CONTOUR





GRAPHITE MUSHROOM

**Technical Specification**

Short Sleeves  
2 Piece Collar  
1 Zip Pocket  
Ventilated Back Yoke  
Side Hem Splits

**Fabric Composition**

100% Polyamide Ripstop

**Fabric Properties**

Mosquito Repellent Finish  
Healthguard EX/SX Treatment  
High Wicking  
Quick Drying  
UPF40+

MOSKITOPHOBIA DUOSKIN+ U.V.



DUSKY PINK CHECK DUSK CHECK

**Technical Specification**

Short Sleeves  
2 Piece Collar  
1 Concealed Zip Pocket  
Button Opening  
Curved Back Hem Shape

**Fabric Composition**

100% Polyester  
Small Check

**Fabric Properties**

Quick Dry

QUICKDRY



WHITE PRINT WILDBERRY PRINT

**Technical Specification**

Short Sleeves  
2 Piece Collar  
1 Concealed Zip Pocket  
Button Opening  
Stretch Elastic Hem

**Fabric Composition**

100% Cotton



BARK DUSKY PINK WILDBERRY

**Technical Specification**

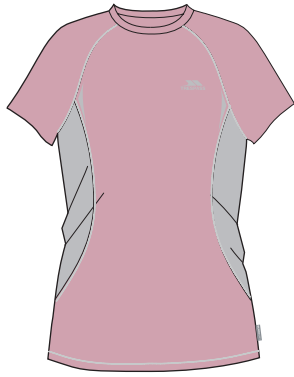
Short Sleeves  
Round Neck  
Contrast Back Neck Binding

**Fabric Composition**

100% Polyester with a Soft Cotton Feel

ACTIVE LAYERS | EMMIE | FABLTPH10006

TP75



BLACK  
QUARTZ

DUSKY PINK  
QUARTZ

WILDBERRY  
QUARTZ

IRIS  
QUARTZ



**Technical Specification**

Short Sleeves  
Round Neck  
Contrast Panels  
Contrast Print

**Fabric Composition**

100% Polyester

**Fabric Properties**

Quick Dry

QUICKDRY *antibacterial*

ADVENTURE | ETIVE | FATOTSH10004

TP75



DUSKY PINK

GHOST

WILDBERRY

**Technical Specification**

Short Sleeves  
Scooped Round Neck  
Tonal Print at Front & Back  
Flat Lock Seams

**Fabric Composition**

95% Polyester /  
5% Elastane

**Fabric Properties**

High Wicking  
Quick Dry  
4 Way Stretch  
150gsm

DUOSKIN QUICKDRY  4 WAY STRETCH

ADVENTURE | PROPS | FATOTSH10003

TP75



DUSKY PINK  
DUSK

GHOST  
DUSK

WILDBERRY  
DUSKY PINK

**Technical Specification**

Short Sleeves  
Scooped Front Neck  
Contrast Side Panels  
Flat Lock Seams

**Fabric Composition**

100% Polyester

**Fabric Properties**

High Wicking  
Quick Dry

DUOSKIN QUICKDRY

ADVENTURE | SPEY | FATOTSH10001

TP75



CITRUS  
DUSK

DUSKY PINK  
DUSK

WILDBERRY  
DUSK

**Technical Specification**

Short Sleeves  
Scooped Round Neck  
Contrast Mesh Panels  
Flat Lock Seams

**Fabric Composition**

95% Polyester /  
5% Elastane

**Fabric Properties**

High Wicking  
Quick Dry  
4 Way Stretch  
150gsm

DUOSKIN QUICKDRY  4 WAY STRETCH



CITRUS    DUSKY PINK    WILDBERRY

**Technical Specification**

Short Sleeves  
 Zip Neck Polo Top  
 Knitted Rib Collar & Cuffs with Grey Marl Stripe

**Fabric Composition**

100% Polyester Birdseye

**Fabric Properties**

Anti Bacterial Finish  
 Quick Dry

QUICKDRY *antibacterial*

ADVENTURE | SUDS | FATOPH10001



CITRUS    DUSKY PINK    GHOST

**Technical Specification**

Zip Neck Polo Top  
 Short Sleeves  
 Rib Collar with Stripes  
 Rib Sleeve Cuff with Stripes  
 Soft Gathers at Front Yoke

**Fabric Composition**

100% Cotton Marl Jersey  
 150gsm

ADVENTURE | BUTTY | FATOTSH10007



GREY MARL WILDBERRY    WILDBERRY DUSKY PINK

**Technical Specification**

Loose Fitting T-Shirt with Contrast Inner Vest Top  
 Discharge Print at Front  
 Coverstitch Seams  
 Wide Round Neck  
 Short Sleeves

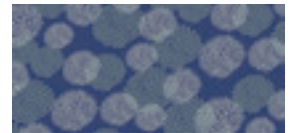
**Fabric Composition**

100% Cotton Jersey  
 130gsm

ADVENTURE | SEYMOUR | FATOTSH10006



CITRUS PRINT GREY MARL    WILDBERRY PRINT GREY MARL



**Technical Specification**

Loose Fitting T-shirt with Grey Marl Inner Vest Top  
 Outer-All Over Print  
 Coverstitch Seams  
 Wide Round Neck  
 Short Sleeves

**Fabric Composition**

100% Cotton Jersey  
 130gsm



DUSK  
BLACK

PUTTY  
BLACK

**Technical Specification**

Adjustable Waist with Woven Belt and Clip Buckle  
Bonded Leg Pocket in Black with Zip  
2 Zip Pockets  
Zip Fly  
Concealed Belt in Waistband  
Mid Length Short

**Fabric Composition**

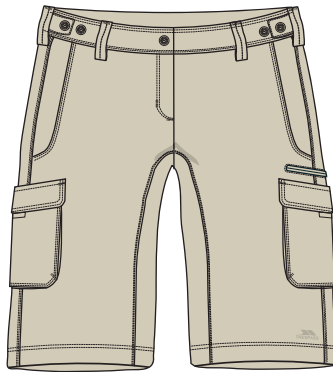
95% Polyamide /  
5% Elastane

**Fabric Properties**

UPF40+  
Comfort Stretch  
Quick Dry  
135gsm



QUICKDRY



BARK

MUSHROOM

**Technical Specification**

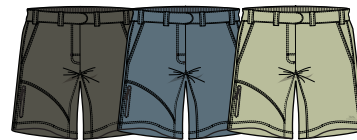
Flat Waist with Side Tab  
Elastic Adjuster  
2 Zip Pockets  
6 Pockets  
Belt Loops  
Knee Length Short

**Fabric Composition**

65% Polyester /  
35% Cotton  
Peached Finish

**Fabric Properties**

UPF40+



BARK

DUSK

PUTTY

**Technical Specification**

Elastic Back Waist  
Low Profile Zip Pocket  
2 Mesh Lined Pockets  
Zip Fly  
Mid Length Shorts

**Fabric Composition**

100% Polamide Taslan

**Fabric Properties**

Quick Dry

QUICKDRY



BARK

DUSK

STONE

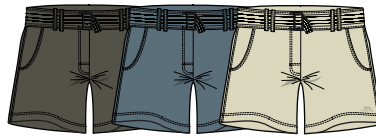
**Technical Specification**

Adjustable Waist with Side Elastic  
2 Low Profile Zip Pockets  
Zip Fly  
Mid Length  
Enzyme Wash

**Fabric Composition**

100% Cotton

ADVENTURE | POW | FABTSHH10002



BARK DUSK STONE

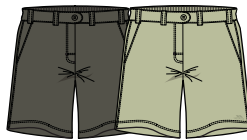
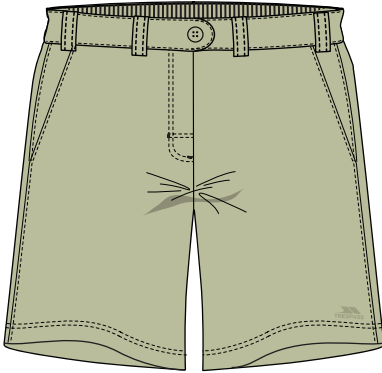
**Technical Specification**

Flat Waist with Fabric Belt  
4 Pockets  
Zip Fly  
Short Length  
Enzyme Washed

**Fabric Composition**

100% Cotton

ADVENTURE | LACENO | FABTSHH10006



BARK STONE

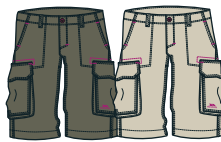
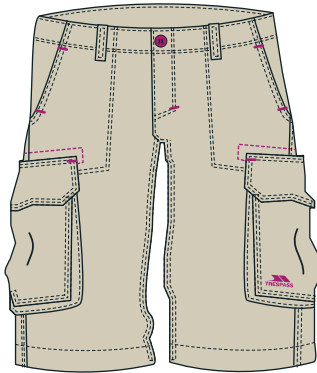
**Technical Specification**

Elastic Back Waist  
4 Pockets  
Zip Fly  
Mid Length Shorts

**Fabric Composition**

100% Cotton

ADVENTURE | BEWARE | FABTSHG10005



BARK BEETROOT MUSHROOM BEETROOT

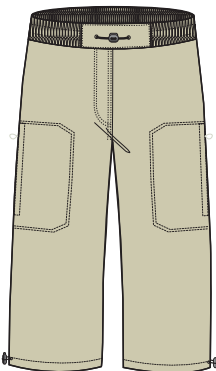
**Technical Specification**

Flat Waist  
Cargo Pockets  
Contrast Stitching  
Front Zip Fly  
Knee Length Short

**Fabric Composition**

100% Cotton Twill Washed Effect  
188gsm

ADVENTURE | LIMITLESS | FABTTQA20001



BLACK EARTH HAY

**Technical Specification**

Elasticated Waist  
Mock Fly Front  
2 Zip Pockets  
1 Pocket  
Drawcord at Waist  
Drawcord at Hem  
3/4 Length

**Fabric Composition**

70% Cotton / 30% Polyamide

## RETOLD ADVENTURE TROUSER

FABTTRG10003 | SIZES: XS-XXL

These full length trousers have been designed with adventure in mind. 2 way stretch panels at the knees and seat ensure maximum mobility at all times.

Lightweight, durable and cool, they offer comfort and practicality for hill walking and everyday travel with a relaxed and contemporary fit. Complete with plenty of storage.



QUICKDRY

Flat waist with side elastic

1 rear zip pocket

Comfort Stretch offers maximum comfort while allowing extreme freedom of movement

Quick Dry Fabric for fast wicking action

2 way stretch panels on knees ensures maximum mobility

2 zipped side pockets

2 slash side pockets

Stretch panels on seat for added comfort and durability

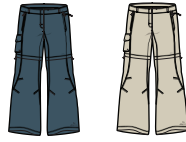
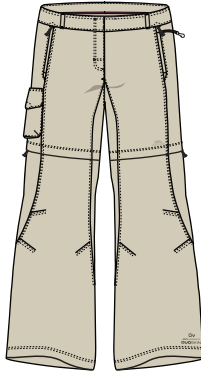
Lightweight

2 zipped side pockets

Articulated knee darts

Side ankle zips





GRAPHITE MUSHROOM

**Technical Specification**

Flat Waist with Belt Loops  
 Zip Off Legs for Shorts  
 3 Zip Pockets  
 1 Side Leg Pocket / Flap  
 Knee Darts

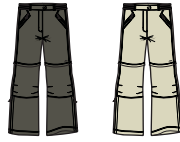
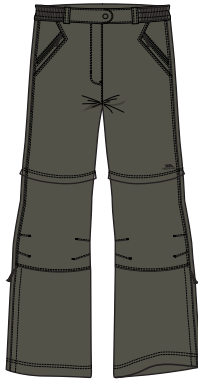
**Fabric Composition**

100% Polyamide Ripstop

**Fabric Properties**

Mosquito Repellent Finish  
 Healthguard EX/SX Treatment  
 High Wicking  
 Quick Drying  
 UPF40+

MOSKITOPHOBIA DUOSKIN+ U.V.



BARK STONE

**Technical Specification**

Side Elastic Waist  
 2 Zip Pockets  
 Zip Off Legs for Shorts  
 Side Hem Zip Opening  
 Knee Darts

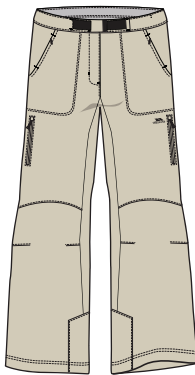
**Fabric Composition**

100% Polyamide Ripstop  
 140gsm

**Fabric Properties**

High Wicking  
 Quick Dry  
 UPF40+

DUOSKIN+ U.V. QUICKDRY



BLACK MUSHROOM

**Technical Specification**

Flat Waist with Woven Belt  
 5 Zip Pockets  
 Hem Drawcord Adjusters  
 Knee Darts  
 Inner Leg Double Layer  
 Kick Patches  
 Soft Tricot Inner Waist

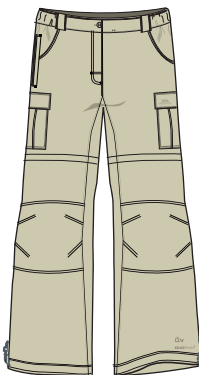
**Fabric Composition**

95% Polyamide /  
 5% Elastane

**Fabric Properties**

UPF40+  
 Comfort Stretch  
 Quick Dry  
 135gsm

U.V. COMFORT STRETCH QUICKDRY



HAY EARTH EARTH HAY LEAD BLACK

**Technical Specification**

Flat Waist with Side Elastic  
 Zip Off Legs for Shorts  
 1 Zip Pocket  
 4 Pockets  
 Articulated Knee Darts  
 Drawcord Hem Adjusters

**Fabric Composition**

100% Polyamide

**Fabric Properties**

Quick Dry  
 UPF 40+

QUICKDRY U.V.

Ⓜ This colour is available in Youths



BLACK

**Technical Specification**

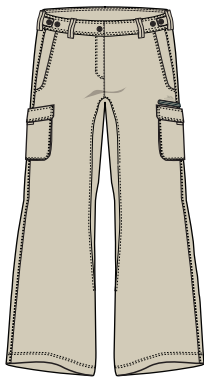
Flat Waist with Side Elastic  
 Stretch Panels on Knees & Upper Back Section  
 Side Ankle Zips  
 7 Pockets  
 Knee Darts

**Fabric Composition**

Main: 100% Polyamide  
 Stretch: 100% Polyester

**Fabric Properties**

Quick Dry  
 Comfort Stretch



BARK



MUSHROOM

**Technical Specification**

Flat Waist with Side Tab  
 Elastic Adjuster  
 2 Zip Pockets  
 6 Pockets  
 Belt Loops

**Fabric Composition**

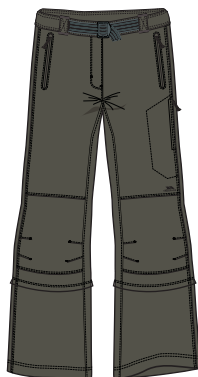
65% Polyester /  
 35% Cotton  
 Peached Finish

**Fabric Properties**

UPF40+



Available in Short, Regular and Long Length



BARK



PUTTY

**Technical Specification**

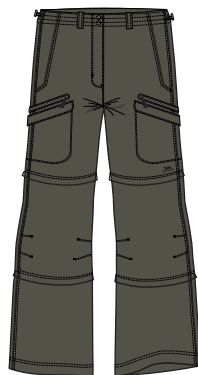
Adjustable Flat Waist with  
 Woven Belt and Clip Buckle  
 Belt Enclosed In Waistband  
 4 Zip Pockets  
 Zip Off Leg for 3/4 Length Pants  
 Knee Darts

**Fabric Composition**

100% Polyamide  
 Peached Taslan

**Fabric Properties**

Quick Dry



BARK



DUSK



STONE

**Technical Specification**

Flat Waist with Toggle Adjusters  
 Zip Off Leg for Shorts & 3/4 Length Pants  
 2 Zip Pockets  
 6 Pockets  
 Knee Darts  
 Enzyme Washed

**Fabric Composition**

100% Cotton



TSHIRT: SEWARD  
SHORTS: BEWARE  
NECKWARMER: EXCURSION

RUCKSACK: LOTUS  
COMPASS: POLARIS  
MAPCASE: CONTOUR

CASUAL | WESTIN | FATOTSG10019



BEETROOT

GHOST

TURQUOISE

**Technical Specification**

Short Sleeves  
Round Neck  
Contrast Print

**Fabric Composition**

65% Polyester / 35% Cotton

CASUAL | ANNAPOLIS | FATOTSG10029



DAMSON

GHOST

**Technical Specification**

Shorts Sleeves  
Round Neck  
Contrast Print

**Fabric Composition**

100% Cotton

CASUAL | SEWARD | FATOTSG10027



SANGRIA

SPEARMINT

**Technical Specification**

Shorts Sleeves  
Round Neck  
Contrast Print

**Fabric Composition**

100% Cotton

CASUAL | DAWSON | FATOTSG10028



AQUA

PEAR

**Technical Specification**

Shorts Sleeves  
Round Neck  
Contrast Print

**Fabric Composition**

100% Cotton

CASUAL | SAVANNAH | FATOTSG10021



WHITE GRAPHITE SPEARMINT

**Technical Specification**

Shorts Sleeves  
Round Neck  
Contrast Print

**Fabric Composition**

65% Polyester / 35% Cotton

CASUAL | NOME | FATOTSG10026



BETROOT TURQUOISE

**Technical Specification**

Shorts Sleeves  
Round Neck  
Contrast Print

**Fabric Composition**

100% Cotton

CASUAL | JANNIE | FATOTSG10023



BETROOT GHOST PEAR TURQUOISE

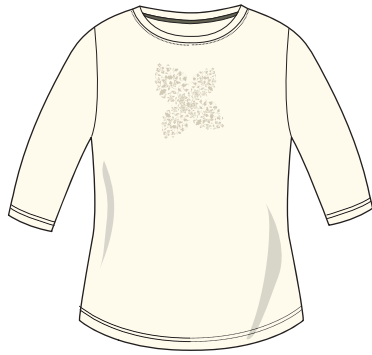
**Technical Specification**

Shorts Sleeves  
Round Neck

**Fabric Composition**

65% Polyester / 35% Cotton

CASUAL | SALTON | FATOLSG10003



AQUA GHOST PEAR VIOLA

**Technical Specification**

3/4 Sleeves  
Round Neck  
Contrast Print on Chest

**Fabric Composition**

100% Cotton Marl

CASUAL | HALIFAX | FATOLSG10004



AQUA GHOST PEAR

**Technical Specification**

Long Sleeves  
Round Neck

**Fabric Composition**

100% Cotton

CASUAL | POSSIBLE | FAJKGIG20001



BLACK SILVER

**Technical Specification**

Lightly Padded Gilet  
2 Concealed Zip Pockets  
Inner Storm Flap  
Quilted Stitching  
Stretch Binding Armholes  
Inner Zip Pocket

**Fabric Composition**

Shell: 100% Polyester  
Mini Ripstop  
Lining: 100% Polyester  
Padding: 100% Polyester  
120gsm

